



[return to CMSH Series specifications](#) | [repair services](#)

CMSH 200 Calibration

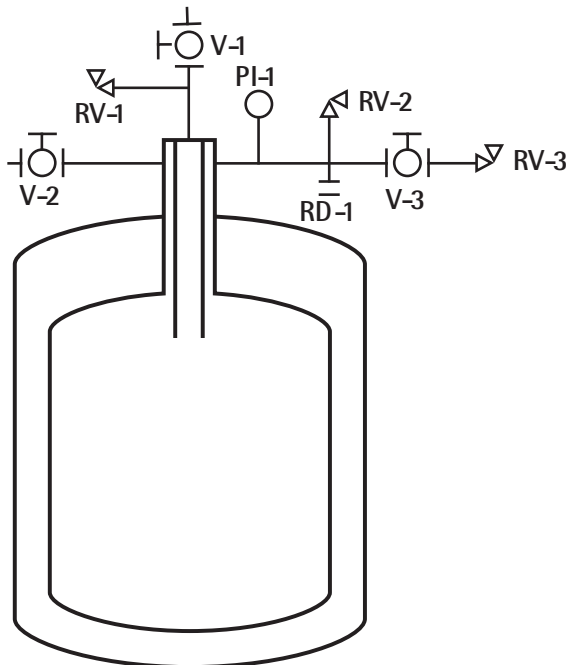
in.	liters
1	1.4
2	5.2
3	11.1
4	18.6
5	27.3
6	36.8
7	46.7
8	56.7
9	66.7
10	76.7
11	86.7
12	96.6
13	106.6
14	116.6
15	126.6
16	136.6
17	146.6
18	156.5
19	166.5
20	176.5
21	186.4
22	196.0
23	204.7
24	212.2
25	218.0
26	221.9
27	223.2

cm	liters	cm	liters
1	0.2	36	118.3
2	0.9	37	122.3
3	1.9	38	126.2
4	3.3	39	130.1
5	5.0	40	134.0
6	7.1	41	138.0
7	9.5	42	141.9
8	12.1	43	145.8
9	14.9	44	149.8
10	18.0	45	153.7
11	21.3	46	157.6
12	24.8	47	161.6
13	28.4	48	165.5
14	32.1	49	169.4
15	35.9	50	173.3
16	39.7	51	177.3
17	43.6	52	181.2
18	47.6	53	185.1
19	51.5	54	188.9
20	55.4	55	192.7
21	59.4	56	196.4
22	63.3	57	199.9
23	67.2	58	203.3
24	71.2	59	206.5
25	75.1	60	209.5
26	79.0	61	212.3
27	82.9	62	214.8
28	86.9	63	217.0
29	90.8	64	218.9
30	94.7	65	220.5
31	98.7	66	221.8
32	102.6	67	222.7
33	106.5	68	223.1
34	110.5		
35	114.4		

Cryofab | [sales\(at\)cryofab.com](mailto:sales(at)cryofab.com)
 phone: 800.426.2186 | 908.686.3636
 fax: 908.686.9538
 540 North Michigan Avenue,
 PO Box 485
 Kenilworth, NJ, USA 07033

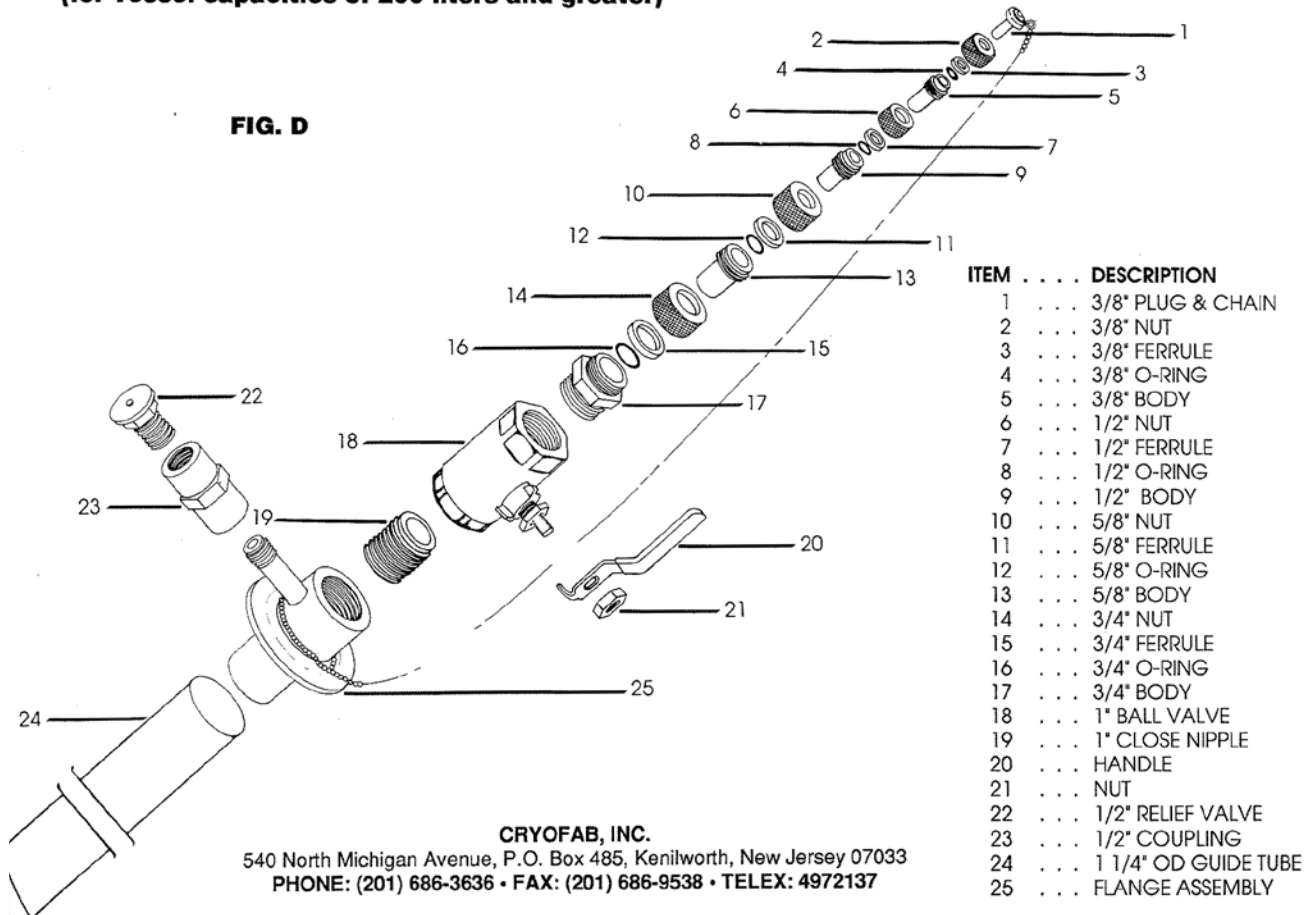
© Cryofab 2017

Piping Schematic



3/4" Liquid Access Port Assembly (for vessel capacities of 200 liters and greater)

FIG. D



CRYOFAB, INC.

540 North Michigan Avenue, P.O. Box 485, Kenilworth, New Jersey 07033
 PHONE: (201) 686-3636 • FAX: (201) 686-9538 • TELEX: 4972137