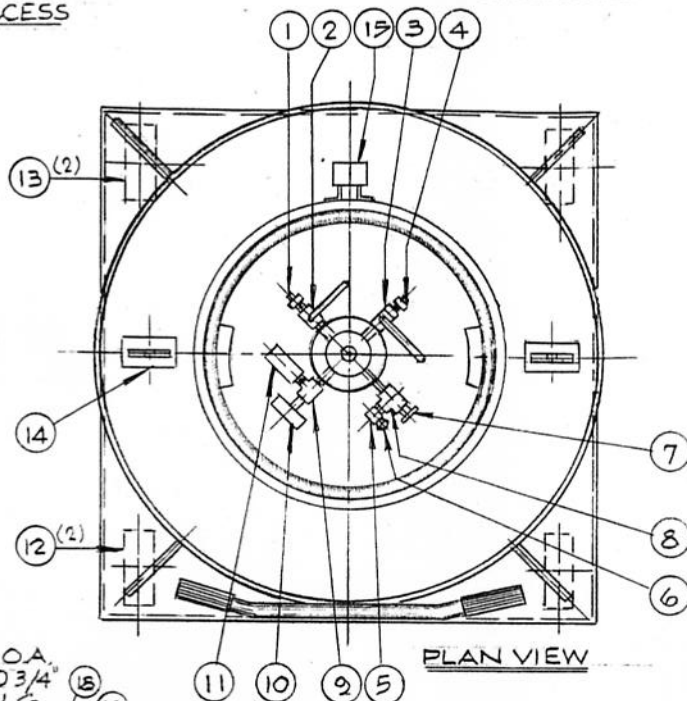
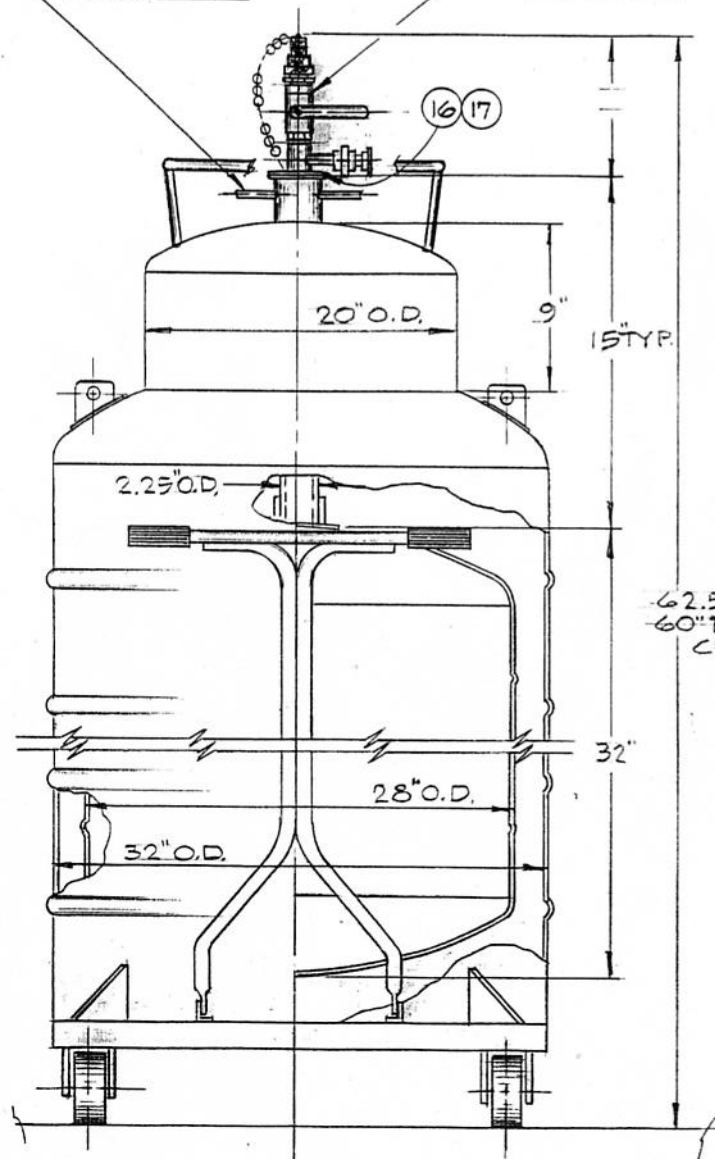
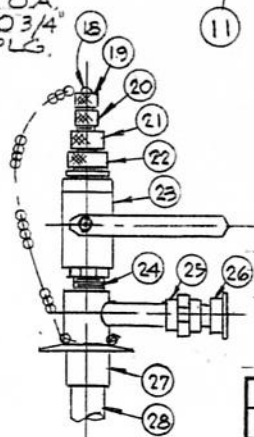


SEE "MANIFOLD DETAIL"
(PLAN VIEW)

SEE "3/4" LIQ. ACCESS
PORT ASSY."





62.5 O.A.
60" TO 3/4"
CPLG.



3/4" LIQUID ACCESS PORT ASSY. SHOWN
(SEE FIG "D" FOR DETAIL) ADDITIONAL
CONFIGURATIONS ARE AVAILABLE

PARTS LIST

NO.	REQ.	DESCRIPTION	MAT'L.
1	1	HEX. NIPPLE, 1/2" NPT	BRASS
2	1	BALL VALVE, 1/2" NPT	BRONZE
3	1	BALL VALVE, 1/4" NPT	BRONZE
4	1	RELIEF VALVE, 1/4" NPT, 1/2 PSIG	BRASS
5	1	ELBOW, 90°, 1/2" NPT	BRASS
6	1	RUPTURE DISC, 1/2" NPT, 35 PSIG	BRASS
7	1	RELIEF VALVE, 1/2" NPT, 10 PSIG	BRASS
8	1	TEE, 1/2" NPT	BRASS
9	1	TEE, 1/4" NPT	BRASS
10	1	COMPOUND GAUGE, 30" HG-0-15 PSIG	S/S
11	1	OSCILLATION CHAMBER	304 S/S
12	2	SWIVEL CASTERS	S/S
13	2	RIGID CASTERS	S/S
14	2	LIFTING LUGS	304 S/S
15	1	PUMP-OUT	
16	1	CLAMP, 2 1/2", HVY. DUTY	
17	1	GASKET, 2 1/2"	BLINA
18	1	PLUG & CHAIN, 3/8"	
19	1	QUICK COUPLING, 3/8"	BRASS
20	1	QUICK COUPLING, PLAIN, 1/2"	BRASS
21	1	QUICK COUPLING, 5/8"	BRASS
22	1	QUICK COUPLING, 3/4"	BRASS
23	1	BALL VALVE, 1" NPT	BRONZE
24	1	CLOSE NIPPLE, 1" NPT	BRASS
25	1	COUPLING, 1/2" NPT	BRASS
26	1	RELIEF VALVE, 1/2" NPT, 15 PSIG	BRASS
27	1	FLANGE ASSY	S/S
28	1	GUIDE TUBE, 1 1/4" O.D. x	G-10

					
		KENILWORTH, N.J. 07033			
		MULTISHIELDED LIQUID HELIUM STORAGE			
		DEWAR, 250 LITER CAPACITY			
ISSUE DATE	BY	REVISION	HECK	DESIGNED BY	DRAWING NO.
				EWB	NTS
				6/30/98	CMSH-250-3
REVISIONS					