

CLD 425 LOX, LH₂, LARG Tank

- The lowest guaranteed loss rates available
- Enhanced suspension system for extended service life
- User friendly plumbing for operation and maintenance
- Common vent stack for simple pipe-away connections
- A mounting scheme that is quick and easy
- Structural dimensions that fit easily into enclosed vans
- Dual scale liquid level gauge that reads in liters and pounds
- Piping components that can be replaced without solder joints
- Designed and manufactured to DOT 4L specifications
- Stainless steel front head for welding integrity and cosmetic improvement
- Regulator on the pressure builder for liquid savings and unattended operation



Available Options:

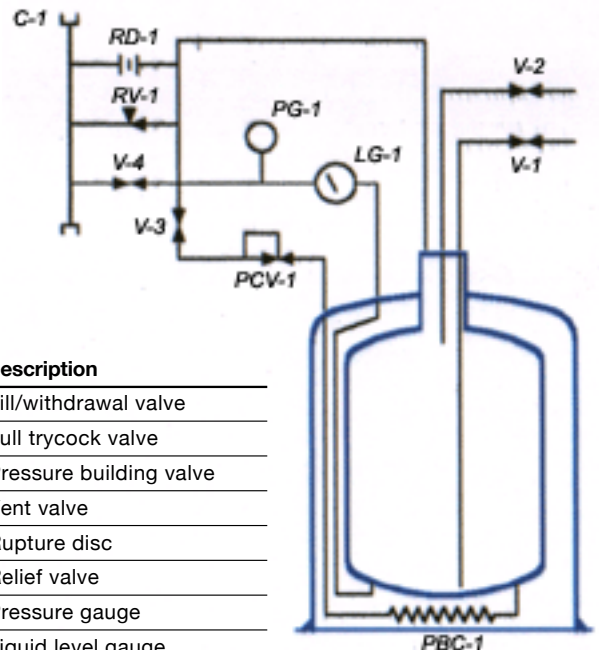
- Drip Pan
- Dealer & Test Gauges
- Fill Heads
- Fill Hose
- Fill Accessories
- Hand Truck
- Mounting Kit
- Vent Kit
- Vent Keys



sales@cryofab.com | 1-800-426-2186

Capacity@22 PSI	425 liters
Gross Capacity	450 liters
Diameter	30"
Height	61"
Overall Length	N/A
Maximum Service Press	100 PSI
Operating Pressure	75 PSI
Regulator Setting	50 PSI
Relief Valve Setting	75 PSI
Secondary Relief	200 PSI
Static Loss Rate	
LOX Service	0.7%/day
LN2 Service	1.0%/day
LARG Service	0.7%/day
Empty Weight	480 lbs.
Weight Full	
LOX	1,550 lbs.
LN2	1,237 lbs.
LARG	1,793 lbs.

View
Another
Size?
[CLD 300,](#)
[CHD 425](#)



Symbol	Description
V-1	Fill/withdrawal valve
V-2	Full trycock valve
V-3	Pressure building valve
V-4	Vent valve
RD-1	Rupture disc
RV-1	Relief valve
PG-1	Pressure gauge
LG-1	Liquid level gauge
C1	Vent Connection
PCV-1	Pressure building regulator
PBC-1	Pressure building coil