



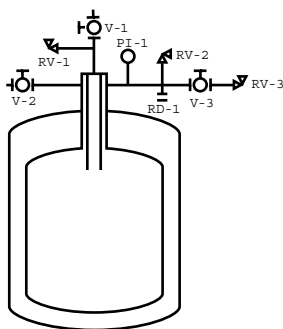
# CMSH 100 LHe Container

- No liquid nitrogen shielding or helium gas circulation required
- Lightweight but rugged construction stands up to trucking and everyday abuse
- Suitable for air transport<sup>1</sup>
- All welded construction
- Lowest loss rates in the industry
- All units equipped with integral caster base
- Easily removable and interchangeable manifolds
- Suitable for neon and all other liquid gases<sup>2</sup>
- Applications include distribution, research and liquefaction
- Two-year warranty on vacuum
- All vessels available with ASME • DOT • TPED • IATA1 • PED

**View Another Size?**  
[30L](#)  
[60L](#)  
[150L](#)  
[200L](#)  
[250L](#)  
[350L](#)  
[500L](#)  
[1000L](#)  
**Transport Vessels**  
[250L](#)  
[400L](#)

Net Capacity	100 L	100 L
Gross Capacity	110 L	110 L
Weight (Empty)	95.5 kg	210 lbs
Material of Construction	304 Stainless Steel	304 Stainless Steel
N.E.R. (Normal Evaporation Rate)	1 %	1 %
Operating Pressure	69 kPa	10 PSI
Design Pressure <sup>2</sup>	310.3 kPa	45 PSI
Neck ID	37 mm	1.45"
Depth (Flange to Bottom)	1171 mm	46"
Outside Overall Diameter	611 mm	24"
Height	1501 mm	59"
Maximum Transfer Line O.D.	12.7 mm	1/2"
Minimum Transfer Line O.D.	9.5 mm	3/8"
Transfer Line Length For Withdrawal	1425 mm	56"
Minimum Fill Lance Length	764 mm	30"
Caster Size	102 mm	4"
Vent Connection (MNPT)		1/2"

## Available Options:



Symbol	Description
V-1	Liquid Valve
V-2	Vent Valve
V-3	Isolation Valve
RD-1	Rupture Disk*
RV-1	Relief Valve, 15 PSI
RV-2	Relief Valve, 10 PSI
RV-3	Pressure Control Valve, .5 PSI
PI-1	Compound Pressure Gauge 30" Hg-0-15 PSI

\*Only on capacities 200 Liters and greater.

- Differential Pressure Liquid Level Gauges
- Super Conducting Liquid Level Systems
- Flow Meters
- Electric Pressure Building Systems
- Absolute Relief Valve For Air Transport
- Larger Neck Openings
- Auxiliary Side Neck
- Removable Dollies
- Outboard Caster Configuration
- Locking Casters (Pedal Lock)