



CMSH 250 LHe Container

- No liquid nitrogen shielding or helium gas circulation required
- Lightweight but rugged construction stands up to trucking and everyday abuse
- Suitable for air transport¹
- All welded construction
- Lowest loss rates in the industry
- All units equipped with integral caster base
- Easily removable and interchangeable manifolds
- Suitable for neon and all other liquid gases²
- Applications include distribution, research and liquefaction
- Two-year warranty on vacuum
- All vessels available with ASME • DOT • TPED • IATA1 • PED

**View
Another
Size?**

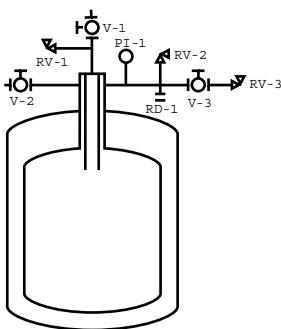
- [30L](#)
- [60L](#)
- [100L](#)
- [150L](#)
- [200L](#)
- [350L](#)
- [500L](#)
- [1000L](#)
- Transport
Vessels**
- [250L](#)
- [400L](#)

Net Capacity	250 L	250 L
Gross Capacity	275 L	275 L
Weight (Empty)	154.5 kg	340 lbs
Material of Construction	304 Stainless Steel	304 Stainless Steel
N.E.R. (Normal Evaporation Rate)	.9 %	.9 %
Operating Pressure	69 kPa	10 PSI
Design Pressure ²	206.9 kPa	30 PSI
Neck ID	54 mm	2.12"
Depth (Flange to Bottom)	1348 mm	53"
Outside Overall Diameter	814 mm	32"
Height	1781 mm	70"
Maximum Transfer Line O.D.	19 mm	3/4"
Minimum Transfer Line O.D.	9.5 mm	3/8"
Transfer Line Length For Withdrawal	1628 mm	64"
Minimum Fill Lance Length	814 mm	32"
Caster Size	127 mm	5"
Vent Connection (MNPT)		1/2"

Available Options:



- *Differential Pressure
Liquid Level Gauges*
- *Super Conducting Liquid
Level Systems*
- *Flow Meters*
- *Electric Pressure
Building Systems*
- *Absolute Relief Valve For
Air Transport*
- *Built-in Vacuum Jacketed
Withdrawal Valve*
- *Larger Neck Openings*
- *Auxiliary Side Neck*
- *Locking Casters
(Wing Style)*



Symbol	Description
V-1	Liquid Valve
V-2	Vent Valve
V-3	Isolation Valve
RD-1	Rupture Disk*
RV-1	Relief Valve, 15 PSI
RV-2	Relief Valve, 10 PSI
RV-3	Pressure Control Valve, .5 PSI
PI-1	Compound Pressure Gauge 30" Hg-0-15 PSI

*Only on capacities 200 Liters and greater.