

CMSH 30 LHe Container



- No liquid nitrogen shielding or helium gas circulation required
- Lightweight but rugged construction stands up to trucking and everyday abuse
- Suitable for air transport¹
- All welded construction
- Lowest loss rates in the industry
- All units equipped with integral caster base
- Easily removable and interchangeable manifolds
- Suitable for neon and all other liquid gases²
- Applications include distribution, research and liquefaction
- Two-year warranty on vacuum
- All vessels available with ASME • DOT • TPED • IATA1 • PED

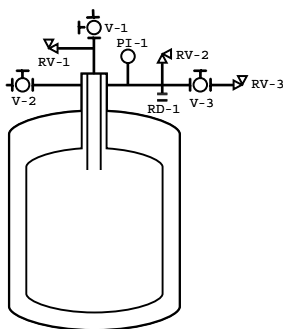
View
Another
Size?
[60L](#)
[100L](#)
[150L](#)
[200L](#)
[250L](#)
[350L](#)
[500L](#)
[1000L](#)
Transport
Vessels
[250L](#)
[400L](#)

Available Options:



- Differential Pressure
- Liquid Level Gauges
- Super Conducting Liquid Level Systems
- Flow Meters
- Absolute Relief Valve For Air Transport
- Larger Neck Openings
- Auxiliary Side Neck
- Outboard Caster Configuration
- Locking Casters (Pedal Lock)

Net Capacity	30 L	30 L
Gross Capacity	34 L	34 L
Weight (Empty)	59.3 kg	131 lbs
Material of Construction	304 Stainless Steel	304 Stainless Steel
N.E.R. (Normal Evaporation Rate)	2.75 %	2.75 %
Operating Pressure	69 kPa	10 PSI
Design Pressure ²	206.9kPa	30 PSI
Neck ID	37 mm	1.45"
Depth (Flange to Bottom)	865 mm	34"
Outside Overall Diameter	509 mm	20"
Height	1221 mm	48"
Maximum Transfer Line O.D.	12.7 mm	1/2"
Minimum Transfer Line O.D.	9.5 mm	3/8"
Transfer Line Length For Withdrawal	1094 mm	43"
Minimum Fill Lance Length	764 mm	30"
Caster Size	102 mm	4"
Vent Connection (MNPT)		1/2"



Symbol	Description
V-1	Liquid Valve
V-2	Vent Valve
V-3	Isolation Valve
RD-1	Rupture Disk*
RV-1	Relief Valve, 15 PSI
RV-2	Relief Valve, 10 PSI
RV-3	Pressure Control Valve, .5 PSI
PI-1	Compound Pressure Gauge 30" Hg-0-15 PSI

*Only on capacities 200 Liters and greater.