

# CLD 425 LOX, LH<sub>2</sub>, LARG Tank

More sizes available

- The lowest guaranteed loss rates available
- Enhanced suspension system for extended service life
- User friendly plumbing for operation and maintenance
- Common vent stack for simple pipe-away connections
- A mounting scheme that is quick and easy
- Structural dimensions that fit easily into enclosed vans
- Dual scale liquid level gauge that reads in liters and pounds
- Piping components that can be replaced without solder joints
- Designed and manufactured to DOT 4L specifications
- Stainless steel front head for welding integrity and cosmetic improvement
- Regulator on the pressure builder for liquid savings and unattended operation



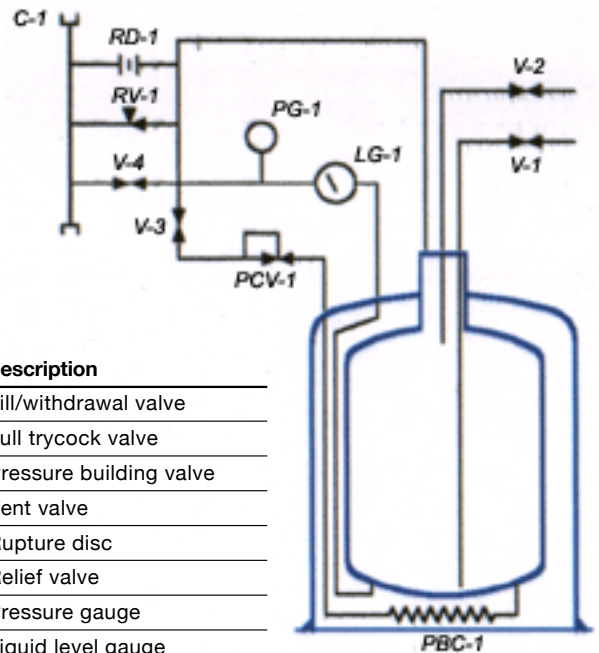
|                       |            |
|-----------------------|------------|
| Capacity@22 PSI       | 425 liters |
| Gross Capacity        | 450 liters |
| Diameter              | 30"        |
| Height                | 61"        |
| Overall Length        | N/A        |
| Maximum Service Press | 100 PSI    |
| Operating Pressure    | 75 PSI     |
| Regulator Setting     | 50 PSI     |
| Relief Valve Setting  | 75 PSI     |
| Secondary Relief      | 200 PSI    |
| Static Loss Rate      |            |
| LOX Service           | 0.7%/day   |
| LN2 Service           | 1.0%/day   |
| LARG Service          | 0.7%/day   |
| Empty Weight          | 480 lbs.   |
| Weight Full           |            |
| LOX                   | 1,550 lbs. |
| LN2                   | 1,237 lbs. |
| LARG                  | 1,793 lbs. |

## Available Options:

- Drip Pan
- Dealer & Test Gauges
- Fill Heads
- Fill Hose
- Fill Accessories
- Hand Truck
- Mounting Kit
- Vent Kit
- Vent Keys



sales@cryofab.com | 1-800-426-2186



| Symbol | Description                 |
|--------|-----------------------------|
| V-1    | Fill/withdrawal valve       |
| V-2    | Full trycock valve          |
| V-3    | Pressure building valve     |
| V-4    | Vent valve                  |
| RD-1   | Rupture disc                |
| RV-1   | Relief valve                |
| PG-1   | Pressure gauge              |
| LG-1   | Liquid level gauge          |
| C1     | Vent Connection             |
| PCV-1  | Pressure building regulator |
| PBC-1  | Pressure building coil      |