

CLH 100 LH₂ Container



- All stainless steel welded construction
- Robust design
- Built-in vacuum insulated fill/withdrawal port
- Bayonet connection for low heat leak transfers
- Purge ports for safety on all valves
- D.O.T. certified 4L50
- Bellows sealed vent, pressurization and isolation valves
- Compact size
- Common vent for piping away relief devices and exhaust port

View
Another
Size?

[250L](#)
[400L](#)

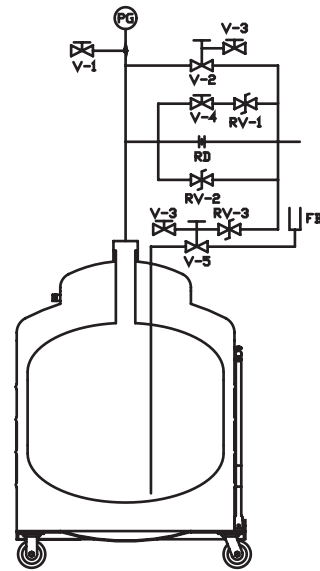
D.O.T.	4L50	4L50
Net Capacity	100 L	100 L
Gross Capacity	110 L	110 L
Outside Diameter	660.4 mm	26"
Height	1422.4 mm	56"
Weight (Empty)	114.3 kg	252 lbs
Weight (Full)	121.6 kg	268 lbs
N.E.R. (Normal Evaporation Rate)	2.0%	2.0%
Transport Pressure	103.5 kPa	15 PSI
M.A.W.P. (Maximum Allowable Working Pressure)	345.0 kPa	50 PSI
Fill/ Withdrawal Connection	1/2" x 6" Linde Female Bayonet	1/2" x 6" Linde Female Bayonet
Caster Size	4"	4"
Vent Connection	3/4" Compression	3/4" Compression

Available Options:

- Wing Nut Locking Casters



Schematic:



Symbol	Description
V-1	Pressurizing Valve
V-2	Vent Valve
V-3	Bennet Purge Port Valve
V-4	Isolation Valve
V-5	Manual Vacuum Jacketed Liquid Withdrawal Valve
PG	Pressure Gauge, 0—200 PSI
RV-1	Pressure Relief Valve, 15 PSI
RV-2	Pressure Relief Valve, 50 PSI
RV-3	Pressure Relief Valve, 50 PSI
RD	Rupture Disc, 150 PSI
FB	Female Bayonet. 1/2"x 6" LINDE