

More Sizes Available

CMSH 1000 LHe Container



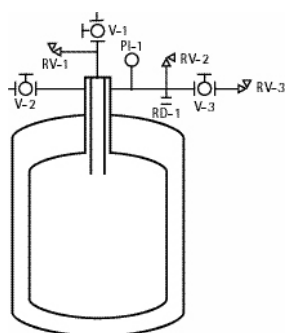
- No liquid nitrogen shielding or helium gas circulation required
- Lightweight but rugged construction stands up to trucking and everyday abuse
- Suitable for air transport¹
- All welded construction
- Lowest loss rates in the industry
- All units equipped with integral caster base
- Easily removable and interchangeable manifolds
- Suitable for neon and all other liquid gases²
- Applications include distribution, research and liquefaction
- Two-year warranty on vacuum
- All vessels available with ASME • DOT • TPED • IATA1 • PED

Net Capacity	1000 L	1000 L
Gross Capacity	1074 L	1074 L
Weight (Empty)	409 kg	900 lbs
Material of Construction	304 Stainless Steel	304 Stainless Steel
N.E.R. (Normal Evaporation Rate)	.5 %	.5 %
Operating Pressure	69 kPa	10 PSI
Design Pressure ²	103.4 kPa	15 PSI
Neck ID	53.4 mm	2.10"
Depth (Flange to Bottom)	1552 mm	61"
Outside Overall Diameter	1374 mm	54"
Height	1981 mm	78"
Maximum Transfer Line O.D.	19 mm	3/4"
Minimum Transfer Line O.D.	9.5 mm	3/8"
Transfer Line Length For Withdrawal	1832 mm	72"
Minimum Fill Lance Length	814 mm	32"
Caster Size	153 mm	6"
Vent Connection (MNPT)		1/2"

Available Options:



- Differential Pressure Liquid Level Gauges
- Super Conducting Liquid Level Systems
- Flow Meters
- Electric Pressure Building Systems
- Absolute Relief Valve For Air Transport
- Built-in Vacuum Jacketed Withdrawal Valve
- Larger Neck Openings
- Auxiliary Side Neck
- Locking Casters (Wing Style)



Symbol	Description
V-1	Liquid Valve
V-2	Vent Valve
V-3	Isolation Valve
RD-1	Rupture Disk*
RV-1	Relief Valve, 15 PSI
RV-2	Relief Valve, 10 PSI
RV-3	Pressure Control Valve, .5 PSI
PI-1	Compound Pressure Gauge 30" Hg-0-15 PSI

*Only on capacities 200 Liters and greater.

U24.02.12