

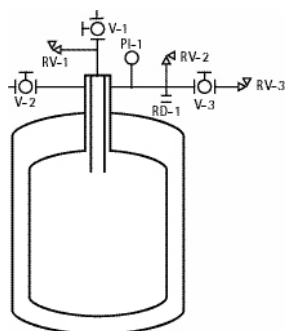
More Sizes Available

# CMSh 150 LHeContainer



- No liquid nitrogen shielding or helium gas circulation required
- Lightweight but rugged construction stands up to trucking and everyday abuse
- Suitable for air transport<sup>1</sup>
- All welded construction
- Lowest loss rates in the industry
- All units equipped with integral caster base
- Easily removable and interchangeable manifolds
- Suitable for neon and all other liquid gases<sup>2</sup>
- Applications include distribution, research and liquefaction
- Two-year warranty on vacuum
- All vessels available with ASME • DOT • TPED • IATA1 • PED

Net Capacity	150 L	150 L
Gross Capacity	171 L	171 L
Weight (Empty)	125 kg	275 lbs
Material of Construction	304 Stainless Steel	304 Stainless Steel
N.E.R. (Normal Evaporation Rate)	1.2 %	1.2 %
Operating Pressure	69 kPa	10 PSI
Design Pressure <sup>2</sup>	206.9 kPa	30 PSI
Neck ID	55.5 mm	2.18"
Depth (Flange to Bottom)	1196 mm	47"
Outside Overall Diameter	713 mm	28"
Height	1527 mm	60"
Maximum Transfer Line O.D.	12.7 mm	1/2"
Minimum Transfer Line O.D.	9.5 mm	3/8"
Transfer Line Length For Withdrawal	1374 mm	54"
Minimum Fill Lance Length	764 mm	30"
Caster Size	127 mm	5"
Vent Connection (MNPT)		1/2"



Symbol	Description
V-1	Liquid Valve
V-2	Vent Valve
V-3	Isolation Valve
RD-1	Rupture Disk*
RV-1	Relief Valve, 15 PSI
RV-2	Relief Valve, 10 PSI
RV-3	Pressure Control Valve, .5 PSI
PI-1	Compound Pressure Gauge 30" Hg-0-15 PSI

\*Only on capacities 200 Liters and greater.

## Available Options:



- Differential Pressure Liquid Level Gauges
- Super Conducting Liquid Level Systems
- Flow Meters
- Electric Pressure Building Systems
- Absolute Relief Valve For Air Transport
- Larger Neck Openings
- Auxiliary Side Neck
- Removable Dollies
- Outboard Caster Configuration
- Locking Casters (Wing Lock)

U24.02.12