

More Sizes Available

CMSH 350 LHe Container



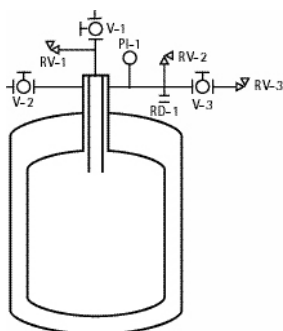
- No liquid nitrogen shielding or helium gas circulation required
- Lightweight but rugged construction stands up to trucking and everyday abuse
- Suitable for air transport¹
- All welded construction
- Lowest loss rates in the industry
- All units equipped with integral caster base
- Easily removable and interchangeable manifolds
- Suitable for neon and all other liquid gases²
- Applications include distribution, research and liquefaction
- Two-year warranty on vacuum
- All vessels available with ASME • DOT • TPED • IATA1 • PED

Net Capacity	350 L	350 L
Gross Capacity	370 L	370 L
Weight (Empty)	173 kg	380 lbs
Material of Construction	304 Stainless Steel	304 Stainless Steel
N.E.R. (Normal Evaporation Rate)	1 %	1 %
Operating Pressure	69 kPa	10 PSI
Design Pressure ²	103.4 kPa	15 PSI
Neck ID	54 mm	2.12"
Depth (Flange to Bottom)	1461 mm	57.5"
Outside Overall Diameter	814 mm	32"
Height	1880 mm	74"
Maximum Transfer Line O.D.	19 mm	3/4"
Minimum Transfer Line O.D.	9.5 mm	3/8"
Transfer Line Length For Withdrawal	1679 mm	66"
Minimum Fill Lance Length	814 mm	32"
Caster Size	127 mm	5"
Vent Connection (MNPT)		1/2"

Available Options:



- Differential Pressure Liquid Level Gauges
- Super Conducting Liquid Level Systems
- Flow Meters
- Electric Pressure Building Systems
- Absolute Relief Valve For Air Transport
- Built-in Vacuum Jacketed Withdrawal Valve
- Larger Neck Openings
- Auxiliary Side Neck
- Locking Casters (Wing Style)



Symbol	Description
V-1	Liquid Valve
V-2	Vent Valve
V-3	Isolation Valve
RD-1	Rupture Disk*
RV-1	Relief Valve, 15 PSI
RV-2	Relief Valve, 10 PSI
RV-3	Pressure Control Valve, .5 PSI
PI-1	Compound Pressure Gauge 30" Hg-0-15 PSI

*Only on capacities 200 Liters and greater.

U24.02.12