



CM SH 100 Calibration

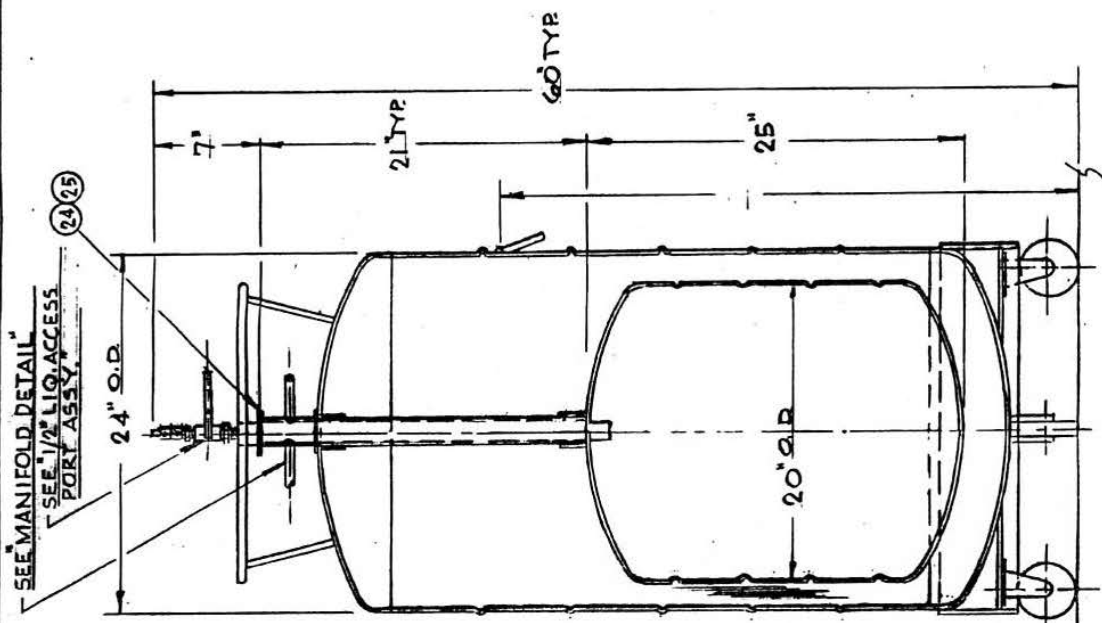
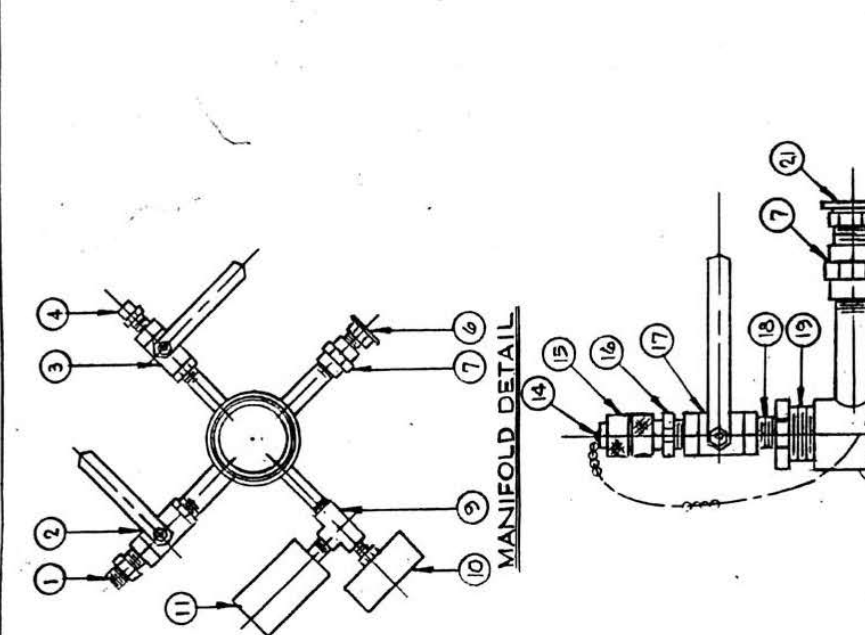
| in. | liters |
|-----|--------|
| 1 | 1.0 |
| 2 | 3.5 |
| 3 | 7.3 |
| 4 | 12.0 |
| 5 | 17.0 |
| 6 | 22.0 |
| 7 | 27.1 |
| 8 | 32.2 |
| 9 | 37.3 |
| 10 | 42.3 |
| 11 | 47.4 |
| 12 | 52.5 |
| 13 | 57.5 |
| 14 | 62.6 |
| 15 | 67.7 |
| 16 | 72.8 |
| 17 | 77.8 |
| 18 | 82.9 |
| 19 | 88.0 |
| 20 | 93.1 |
| 21 | 98.1 |
| 22 | 102.7 |
| 23 | 106.5 |
| 24 | 109.1 |
| 25 | 110.0 |

| cm | liters | cm | liters |
|----|--------|----|--------|
| 1 | 0.2 | 33 | 57.5 |
| 2 | 0.6 | 34 | 59.5 |
| 3 | 1.3 | 35 | 61.5 |
| 4 | 2.3 | 36 | 63.5 |
| 5 | 3.4 | 37 | 65.5 |
| 6 | 4.8 | 38 | 67.5 |
| 7 | 6.3 | 39 | 69.5 |
| 8 | 8.0 | 40 | 71.5 |
| 9 | 9.8 | 41 | 73.5 |
| 10 | 11.7 | 42 | 75.5 |
| 11 | 13.6 | 43 | 77.5 |
| 12 | 15.6 | 44 | 79.5 |
| 13 | 17.6 | 45 | 81.5 |
| 14 | 19.6 | 46 | 83.5 |
| 15 | 21.6 | 47 | 85.5 |
| 16 | 23.6 | 48 | 87.4 |
| 17 | 25.6 | 49 | 89.4 |
| 18 | 27.6 | 50 | 91.4 |
| 19 | 29.5 | 51 | 93.4 |
| 20 | 31.5 | 52 | 95.4 |
| 21 | 33.5 | 53 | 97.4 |
| 22 | 35.5 | 54 | 99.3 |
| 23 | 37.5 | 55 | 101.1 |
| 24 | 39.5 | 56 | 102.9 |
| 25 | 41.5 | 57 | 104.5 |
| 26 | 43.5 | 58 | 105.9 |
| 27 | 45.5 | 59 | 107.2 |
| 28 | 47.5 | 60 | 108.2 |
| 29 | 49.5 | 61 | 109.1 |
| 30 | 51.5 | 62 | 109.7 |
| 31 | 53.5 | 63 | 110.0 |
| 32 | 55.5 | | |

Cryofab | sales(at)cryofab.com
 phone: 800.426.2186 | 908.686.3636
 fax: 908.686.9538
 540 North Michigan Avenue,
 PO Box 485
 Kenilworth, NJ, USA 07033

© Cryofab 2017

| PARTS LIST | | | |
|------------|------|-----------------------------------|-----|
| NO. | REQ. | DESCRIPTION | MA |
| 1 | 1 | HEX NIPPLE, 1/2" NPT | BR4 |
| 2 | 1 | BALL VALVE, 1/2" NPT | BR4 |
| 3 | 1 | BALL VALVE, 1/4" NPT | BR4 |
| 4 | 1 | RELIEF VALVE, 1/4" NPT, 1/2 PSIG | BR4 |
| 5 | 1 | NOT LISTED | |
| 6 | 1 | RELIEF VALVE, 1/2" NPT, 10 PSIG | BR4 |
| 7 | 2 | COUPLING, 1/2" NPT | BR4 |
| 8 | 1 | NOT LISTED | |
| 9 | 1 | TEE, 1/4" NPT | BR4 |
| 10 | 1 | COMPOUND GAUGE, 30 1/2" O-30 PSIG | 5/3 |
| 11 | 1 | OSCILLATION CHAMBER | 304 |
| 12 | 1 | PLUG & CHAIN, 3/8" | |
| 13 | 1 | QUICK COUPLING, 3/8" | BR4 |
| 14 | 1 | QUICK COUPLING, THRD. 1/4" | BR4 |
| 15 | 1 | BALL VALVE, LIQ. 1/2" NPT | BR4 |
| 16 | 1 | CLOSE NIPPLE, 1/2" NPT | BR4 |
| 17 | 1 | BUSHING, 1/2" FNPT x 1" MNPT | BR4 |
| 18 | 1 | NOT LISTED | |
| 19 | 1 | RELIEF VALVE, 1/2" NPT, 15 PSIG | BR4 |
| 20 | 1 | FLANGE ASSY. | 5/3 |
| 21 | 1 | GUIDE TUBE, 7" O.D.* | G-1 |
| 22 | 1 | CLAMP LIGHT DUTY, 3/4" | BR4 |
| 23 | 1 | GASKET, 2 1/2" | BR4 |
| 24 | 1 | PUMP OUT (NOT SHOWN) | |



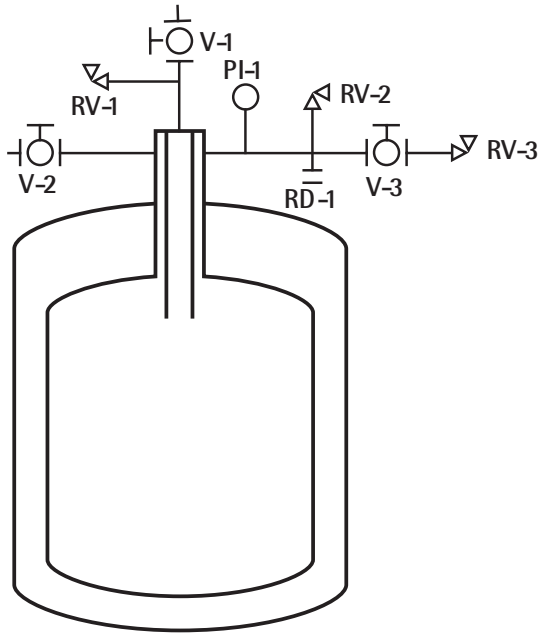
1/2" LIQUID ACCESS PORT ASSY. SHOWN (SEE FIG. A) FOR DETAIL.
ADDITIONAL LIQUID ACCESS PORT CONFIGURATIONS
ARE AVAILABLE.

Cryotab

LINDEN, N.J. 07036

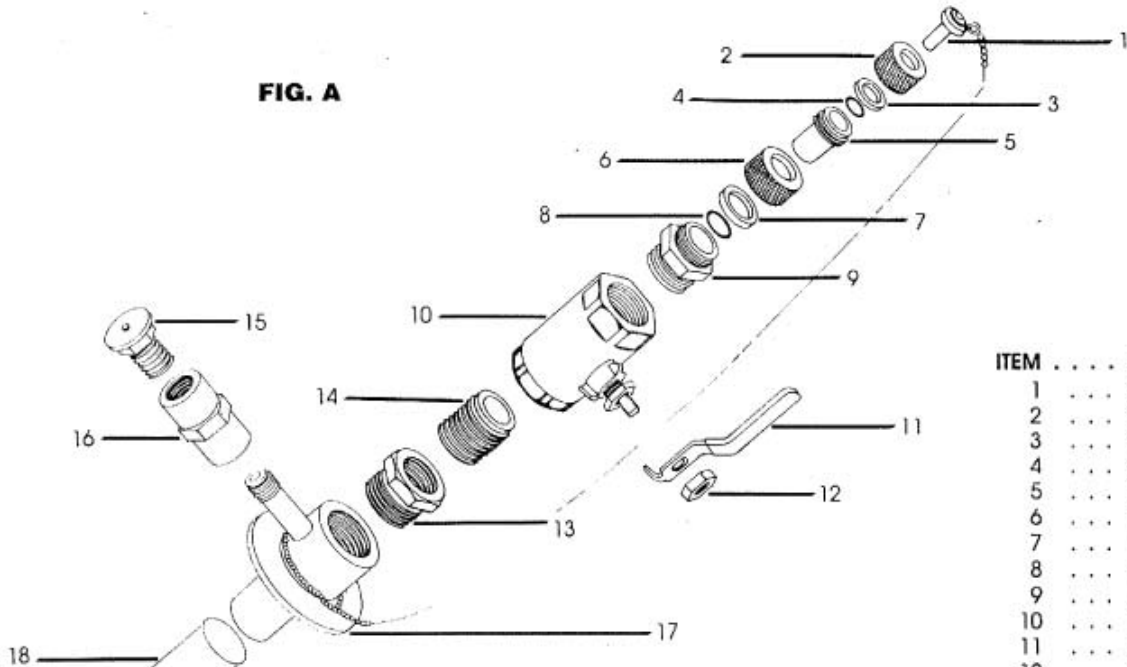
| | |
|-------------------------------------|-------------------|
| MULTISHIELDED LIQUID HELIUM STORAGE | |
| DEWAR, 100 LITER CAPACITY | |
| DATE: _____ | REVISED: _____ |
| DRAWN BY: _____ | CHECKED BY: _____ |
| APPROVED BY: _____ | DATE: _____ |
| REVISIONS | DATE |
| NTS | CRUSH-100 |

Piping Schematic



1/2" Liquid Access Port Assembly (for vessel capacities of 150 liters and less)

FIG. A



| ITEM | DESCRIPTION |
|------|------------------|
| 1 | 3/8" PLUG & CHA |
| 2 | 3/8" NUT |
| 3 | 3/8" FERRULE |
| 4 | 3/8" O-RING |
| 5 | 3/8" BODY |
| 6 | 1/2" NUT |
| 7 | 1/2" FERRULE |
| 8 | 1/2" O-RING |
| 9 | 1/2" BODY |
| 10 | 1/2" BALL VALV |
| 11 | HANDLE |
| 12 | NUT |
| 13 | BUSHING |
| 14 | 1/2" CLOSE NIPPL |
| 15 | 1/2" RELIEF VALV |
| 16 | 1/2" COUPLING |
| 17 | FLANGE ASSEMB |
| 18 | 7/8" OD GUIDE |

CRYOFAB, INC.
 540 North Michigan Avenue, P.O. Box 485, Kenilworth, New Jersey 07033
 PHONE: (201) 686-3636 • FAX: (201) 686-9538 • TELEX: 4972137