

# CLH 250 LH<sub>2</sub> Container



- All stainless steel welded construction
- Robust design
- Built-in vacuum insulated fill/withdrawal port
- Bayonet connection for low heat leak transfers
- Purge ports for safety on all valves
- D.O.T. certified 4L50
- Bellows sealed vent, pressurization and isolation valves
- Compact size
- Common vent for piping away relief devices and exhaust port

View  
Another  
Size?

[100L](#)  
[400L](#)

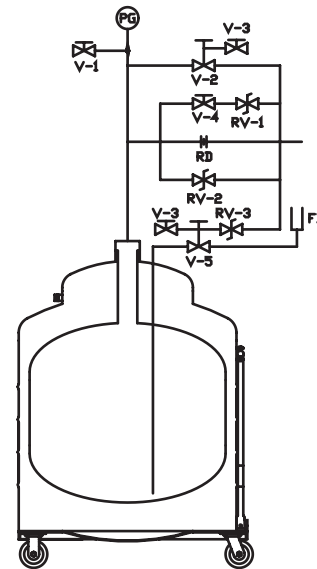
D.O.T.	4L50	4L50
Net Capacity	250 L	250 L
Gross Capacity	275 L	275 L
Outside Diameter	812.8 mm	32"
Height	1625.6 mm	64"
Weight (Empty)	186.0 kg	410 lbs
Weight (Full)	203.7 kg	449 lbs
N.E.R. (Normal Evaporation Rate)	1.6%	1.6%
Transport Pressure	103.5 kPa	15 PSI
M.A.W.P. (Maximum Allowable Working Pressure)	345.0 kPa	50 PSI
Fill/ Withdrawal Connection	1/2" x 6" Linde Female Bayonet	1/2" x 6" Linde Female Bayonet
Caster Size	5"	5"
Vent Connection	3/4" Compression	3/4" Compression

## Available Options:

- Wing Nut Locking Casters



## Schematic:



Symbol	Description
V-1	Pressurizing Valve
V-2	Vent Valve
V-3	Bennet Purge Port Valve
V-4	Isolation Valve
V-5	Manual Vacuum Jacketed Liquid Withdrawal Valve
PG	Pressure Gauge, 0—200 PSI
RV-1	Pressure Relief Valve, 15 PSI
RV-2	Pressure Relief Valve, 50 PSI
RV-3	Pressure Relief Valve, 50 PSI
RD	Rupture Disc, 150 PSI
FB	Female Bayonet. 1/2"X6" LINDE